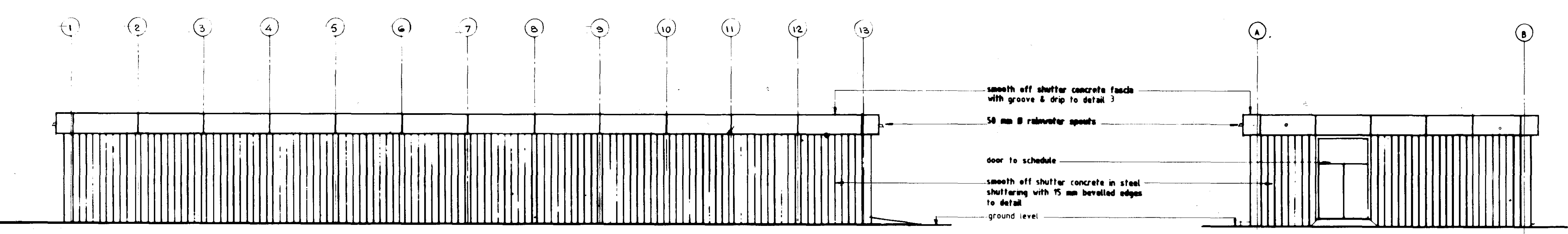


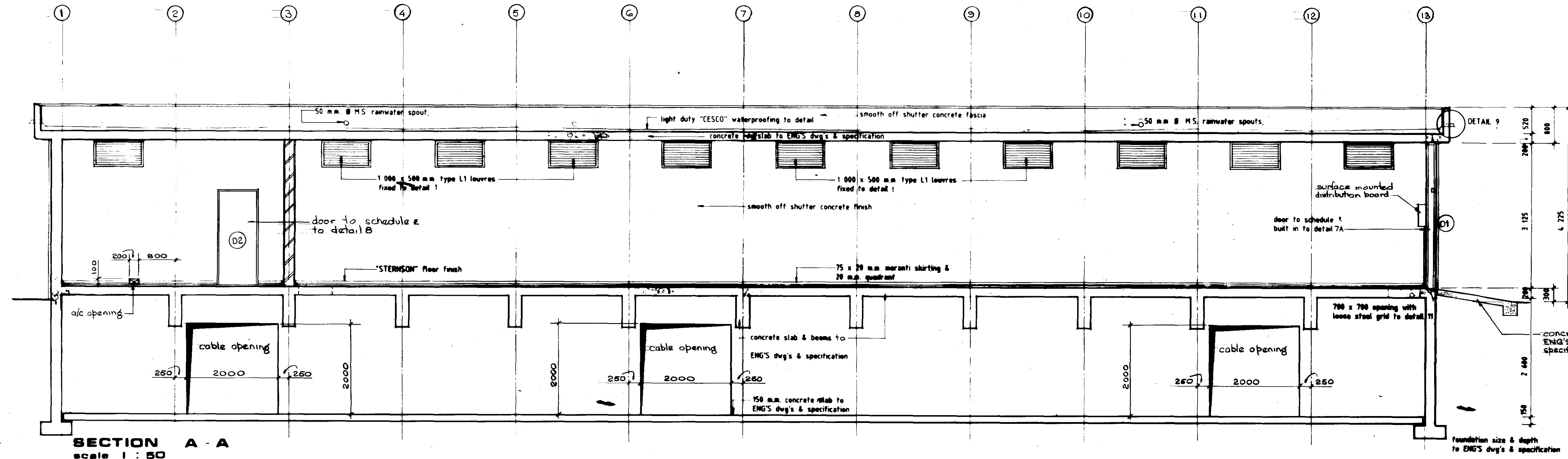
EAST ELEVATION
scale 1:100

NORTH ELEVATION
scale 1:100

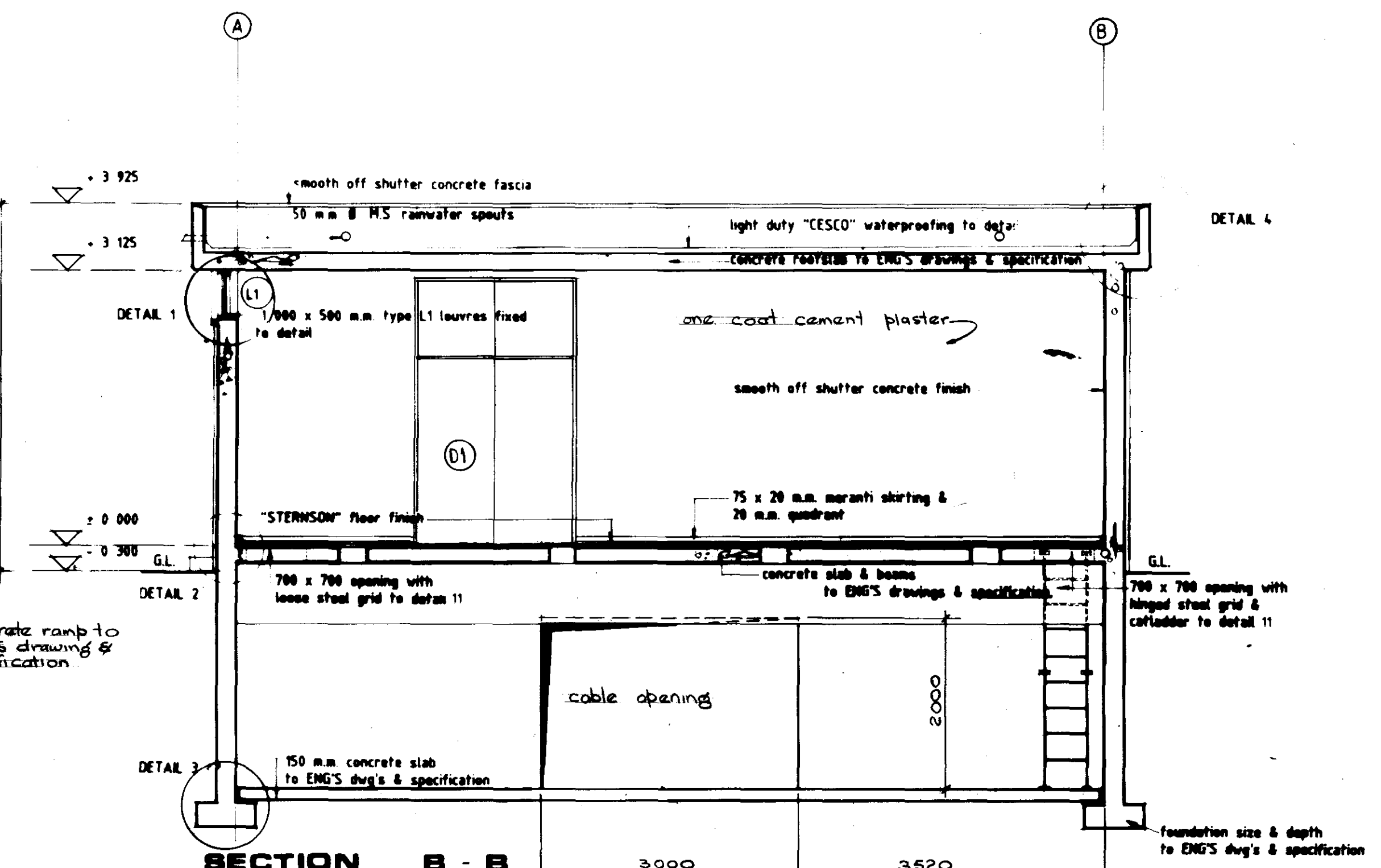


WEST ELEVATION
scale 1:100

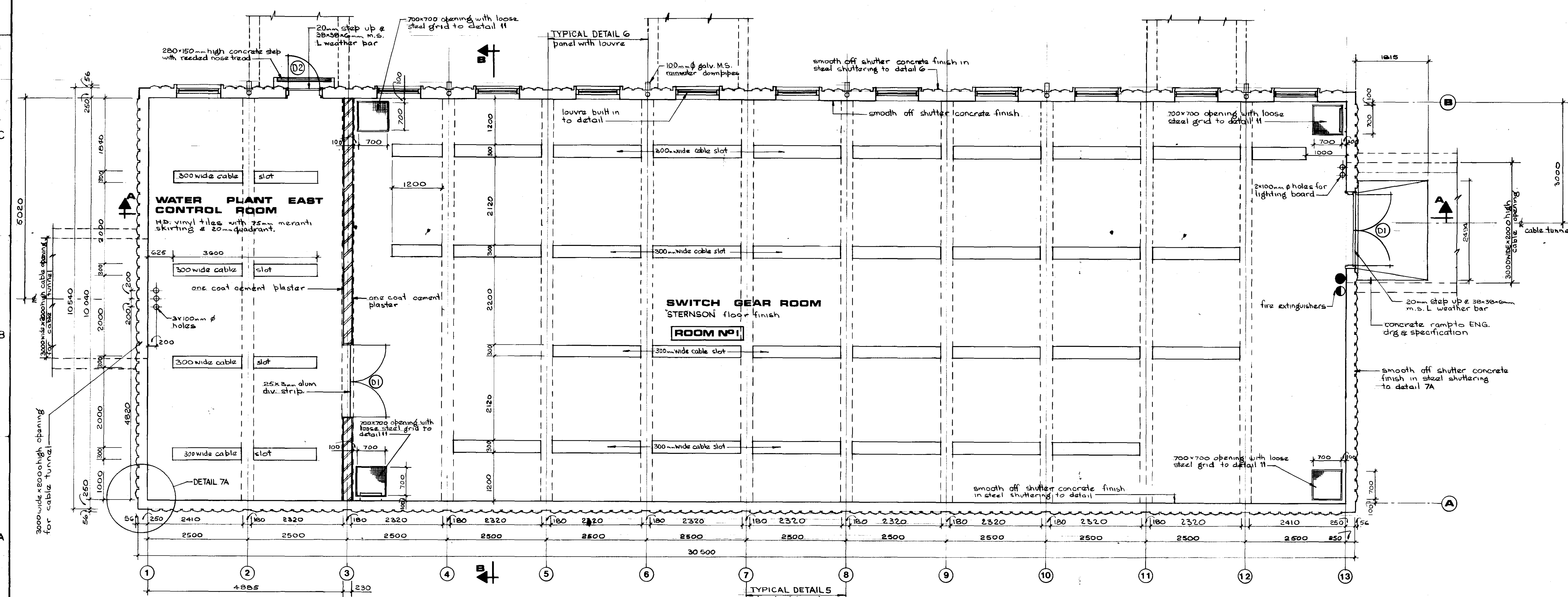
SOUTH ELEVATION
scale 1:100



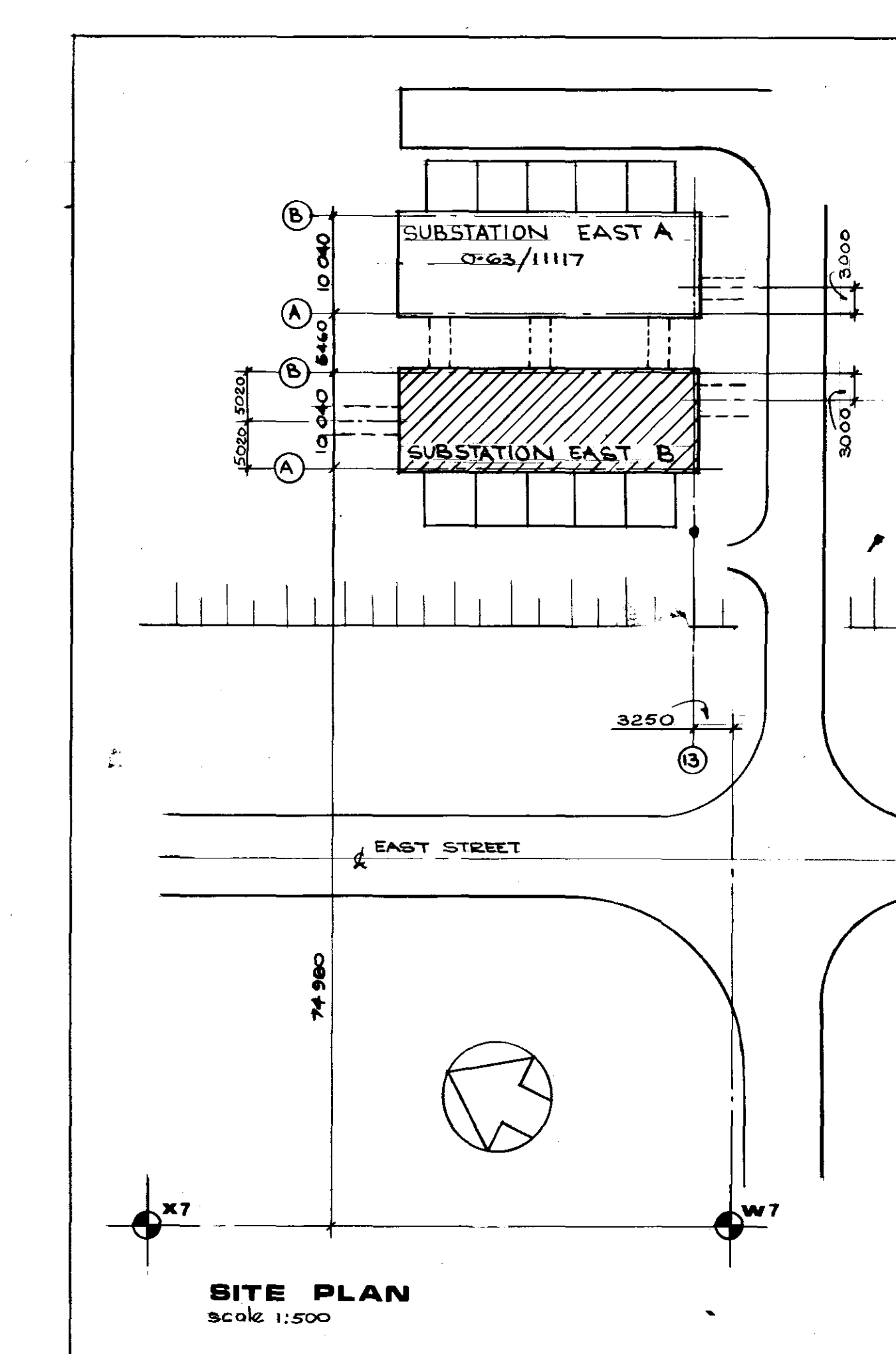
SECTION A - A
scale 1:50



SECTION B - B
scale 1:50



PLAN
scale 1:50



SITE PLAN
scale 1:500

- LOOSE FIRE CONTROL EQUIPMENT**
- 1 kg DRY POWDER
 - 4.5 kg CO₂
 - MOUSE REEL
 - 4.5 kg CO₂
 - 9 kg CO₂
- TYPES OF EXTINGUISHERS SHALL BE CO₂ OR GENERAL PURPOSE DRY POWDER. ALL EXTINGUISHERS SHALL BE COMPLETE WITH A CARRYING HANDLE, WALL MOUNTING BRACKET, TUBE AND NOZZLE AND SHALL BE EASILY RE-CHARGEABLE.
- EXTERNALLY LOCATED EXTINGUISHERS SHALL BE MOUNTED IN A WEATHERPROOF WALL MOUNTED CABINET WITH A LOCKED DOOR HAVING A KEY IN THE DOOR BEHIND A BREAK-GLASS COMPARTMENT.

DOOR SCHEDULE						
DOOR N°	QUANTITY	HAND & WALL THICKNESS			FRAME / DOOR TYPE	DRG N°
		LEFT HAND	RIGHT HAND	DOUBLE		
D1	2	115 230 280	115 230 280	115 230 280	DF 37	37
D2	1	1	1	2	DF 38	38

NOTE: MASTERKEYS (INC. ALL CYLINDER LOCKS) CONSTRUCTION PERFORMED BY TINEA, SUB. SUITE 18.

FACTORY INSPECTORS SCHEDULE									
ROOM N°	DESIGNATION	FLOOR AREA M ²	WIND AREA M ²	AREA OPENING M ²	AIR COND	ILLUMIN LUX	GLARE INDEX	NUMBER PERSONS	% NAT LIGHT
1	SWITCH GEAR ROOM	251.64	—	4.54					
2	CONTROL ROOM	49.64	—	—					

- NOTES:**
1. LIGHT DUTY "TESCO" WATERPROOFING LAYED BY SPECIALISTS IN ACCORDANCE WITH MANUFACTURERS SPECIFICATIONS AND FALLS TO 10mm @ 100mm OUTLETS ON PER 75mm SCALED TOP OF OUTLET FLANGE TO FINISH PLUSH WITH TOP OF SCALEDING & WATERPROOFING SECURELY DRESSED INTO OUTLET & UP AGAINST FASCIA UPSTAND TO DETAIL.
 2. 50mm M.S. FASCIA GROOVE & COMP TO DETAIL.
 3. 50mm M.S. GALVANISED M.S. RAINWATER SPOUT TO DETAIL.
 4. 50mm M.S. GALVANISED M.S. RAINWATER DOWNPIPES EXCHANGING MAX. 250mm ABOVE F.F.L.
 5. ALL EXPOSED CONCRETE SURFACES TO BE SMOOTH OFF SHUTTER CONCRETE FINISH IN STEEL SHUTTERING WITH 15mm BEVELLED EDGES TO DETAIL.
 6. 1000 x 500 x 100mm ANGLE IRON JOINTS WELDED TO 50 x 50mm ANGLE SUBFRAME IN PRESSED METAL FRAME SURROUNDING & BUILT INTO WALL TO DETAIL.
 7. STANDARD DOORS & FRAMES AS PER DOOR SCHEDULE AND BUILT INTO WALL TO DETAIL.
 8. DISTRIBUTION BOARD 1:1.50 & POLYETHYLENE CABLE ENTRY PIPE IN ACCORDANCE WITH S.A.B.S. 533 TYPE 1 CLASS 3 BROUGHT UP THROUGH FLOOR WITH GENTLE RADIUS BEND AND UP AGAINST INTERNAL FACE OF CONCRETE WALL TERMINATING 75mm ABOVE F.F.L. AND EXTENDING 600mm BEYOND EXTERNAL FACE OF CONCRETE WALL PIPE TO BE SUPPLIED AND INSTALLED BY BUILDING CONTRACTOR TO ENGINEERS DETAILS & DRAWINGS.
 9. 200mm THICK CONCRETE FLOOR TO ENGINEERS DRAWINGS AND DETAILS WITH "STERNSON" COLORHARD INDUSTRIAL NON METALLIC FLOOR HARDENER FINISHED WITH "STERNSON" FLORESAL TO MANUFACTURERS SPECIFICATION 10 FOUNDATIONS, BEAMS & SLABS TO ENGINEERS DETAILS & DRAWINGS.
 10. SHUTTERING AND PROFILE TO DETAIL AND SPECIFICATION.
 11. 50mm M.S. CABLE SLEEVES IN CONCRETE BEAMS TO ENGINEERS DETAILS TERMINATING AT F.F.L. WITH SMOOTH ROUNDED INTERNAL EDGES.
 12. ALL CABLE OPENINGS TO BE SEALED OFF WITH VERMICULITE PLUSH WITH F.F.L. AFTER COMPLETE CABLE INSTALLATION.

NOTE: FOR STANDARD SUB STATION DETAILS SEE DRAWING 0-63/11342.

1117 STATION EAST 'A'		0-63/1117	
1117 STATION EAST 'B'		0-63/1117	
1117 STATION EAST 'C'		0-63/1117	
1117 STATION EAST 'D'		0-63/1117	
1117 STATION EAST 'E'		0-63/1117	
1117 STATION EAST 'F'		0-63/1117	
1117 STATION EAST 'G'		0-63/1117	
1117 STATION EAST 'H'		0-63/1117	
1117 STATION EAST 'I'		0-63/1117	
1117 STATION EAST 'J'		0-63/1117	
1117 STATION EAST 'K'		0-63/1117	
1117 STATION EAST 'L'		0-63/1117	
1117 STATION EAST 'M'		0-63/1117	
1117 STATION EAST 'N'		0-63/1117	
1117 STATION EAST 'O'		0-63/1117	
1117 STATION EAST 'P'		0-63/1117	
1117 STATION EAST 'Q'		0-63/1117	
1117 STATION EAST 'R'		0-63/1117	
1117 STATION EAST 'S'		0-63/1117	
1117 STATION EAST 'T'		0-63/1117	
1117 STATION EAST 'U'		0-63/1117	
1117 STATION EAST 'V'		0-63/1117	
1117 STATION EAST 'W'		0-63/1117	
1117 STATION EAST 'X'		0-63/1117	
1117 STATION EAST 'Y'		0-63/1117	
1117 STATION EAST 'Z'		0-63/1117	

0.000 = 1458,300

0-63/11342